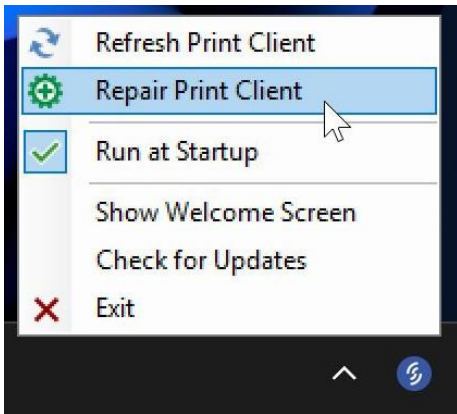


Repair Print Client - Windows

Repairing the print client will download and run the installer in order to write over any parts of it that may have been damaged. **This is particularly useful if the Refresh Print Client option throws an error.**

Please make sure you are using the latest version of the Support Tool; previous versions will reset your station pairing, meaning you will need to contact support to re-attach your station if you use the Repair function on those older versions.



Wait a few minutes after the repair process completes for your station to come online. If you continue to face issues, please contact support.

Revision #4

Created 14 May 2025 15:23:41 by Stan Andrus

Updated 1 December 2025 09:46:30 by Oleksandr Kozachenko